

BEST LAMPS

www.bstlamps.com

Materials:

- Body: High-pressure die-cast aluminium.
- Protector: Super white tempered glass.
- Color : Any other RAL.

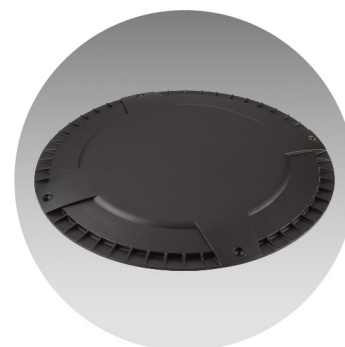
BST-2000T-L



BST-2000F-L



Special light distribut-ion lens,
diffuser with super white tempered glass.



High strength die-casting aluminium
heat sink, cast by 800T die-cast machine.

Electrical disconnecter(immediate,
automatic disconnection of the power supply).

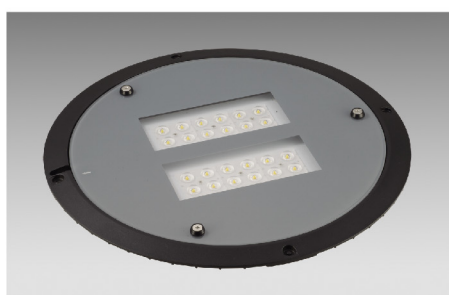
Silicone gasket providing an IP 66
tightness level to the entire luminaire.



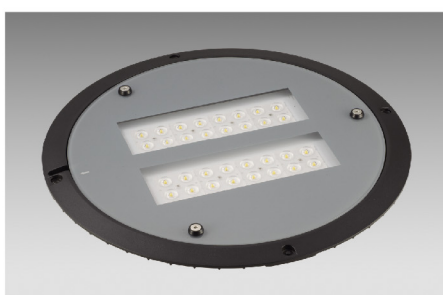
Gear plate:Steel plate, Replacement
of wiring plate without requiring tools.



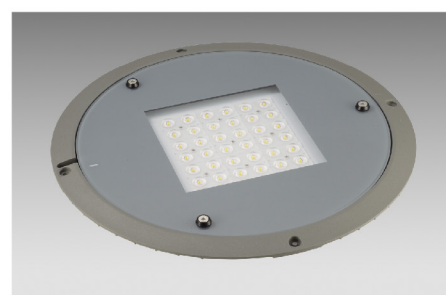
Designed with a button-opening system
that does not require any type of tool.



CREE XTE 24 LEDs for 30W/40W



CREE XTE 32 LEDs for 60W/80W



CREE XTE 36 LEDs for 60W/80W

NINGBO BEST LAMPS CO.,LTD.

Add: NO.99,ZhenXing West Road,Economic Development
Zone,Yuyao,Zhejiang,China.

Tel.: 0086-574-62378616

Fax: 0086-574-62378618

E-mail: sales@bstlamps.com

Skype: wendyrz17

WhatsApp:+8613736023235

Web: www.bstlamps.com

P.C: 315400

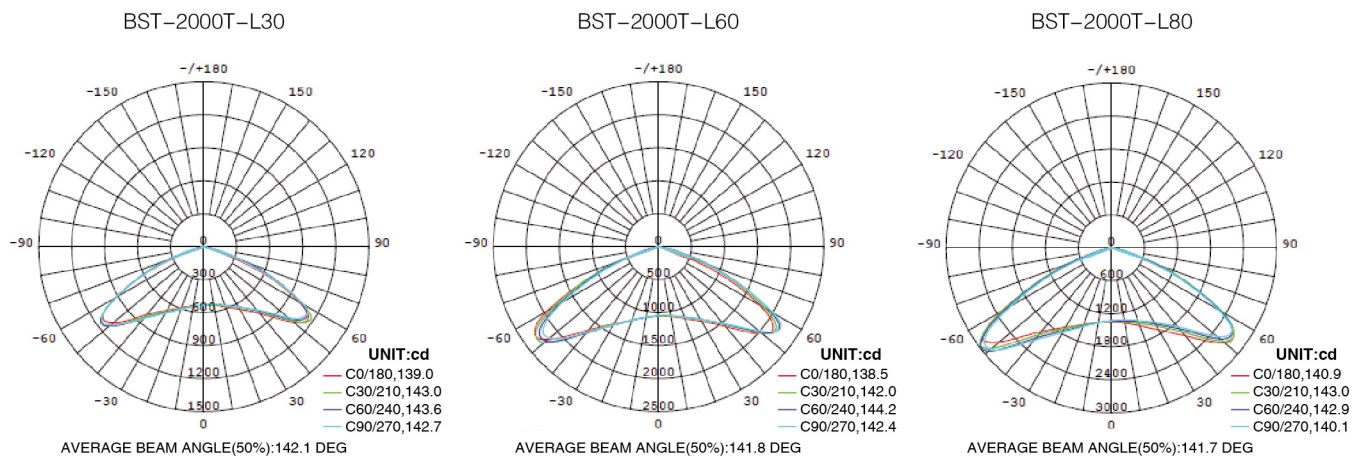


BST-2000T/F-L

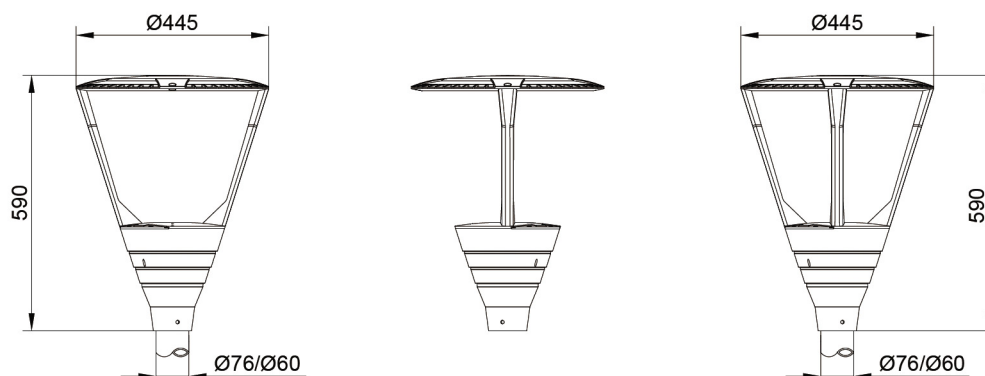
Product Description

Product Code	BST-2000T/F-L					
LED Quantity	24 LED	24 LED	32 LED	36LED	32 LED	36LED
Rated Power	30W	40W	60W	60W	80W	80W
Color Temperature	3000/4000/5000/6500K					
Luminous Flux	2930lm	3900lm	5600lm	5600lm	7200lm	7200lm
Light Efficiency	90-110lm/W					
Voltage/Frequency	100-277V/50-60Hz					
Power Factor	PF>0.9					
Color Rendering Index	>70					
Installation Height	3-5m					
IP Protection degrees	IP66					
IK Protection degrees	IK10					
Lamp Weight T/F:N.W(Kg)	8.14/8.52	8.14/8.52	8.26/8.62	8.34/8.62	8.34/8.62	8.34/8.70
Warranty(Years)	5 Years					
Packing Size	455x455x610mm					

Light Distribution Curve



Product Dimension



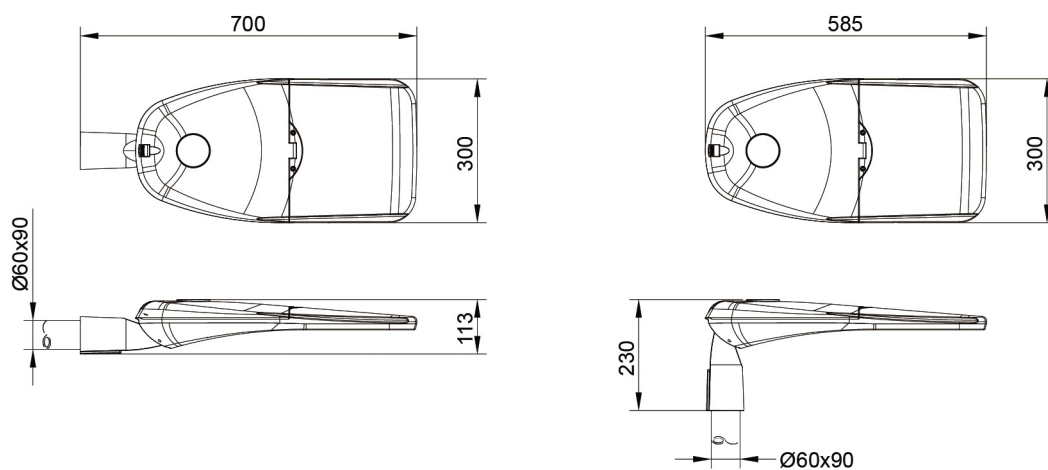
Materials:

- Body: High-pressure die-cast aluminium.
- Protector: Super white tempered glass.
- Color : Any other RAL.

BST-1000-L



Product Dimension



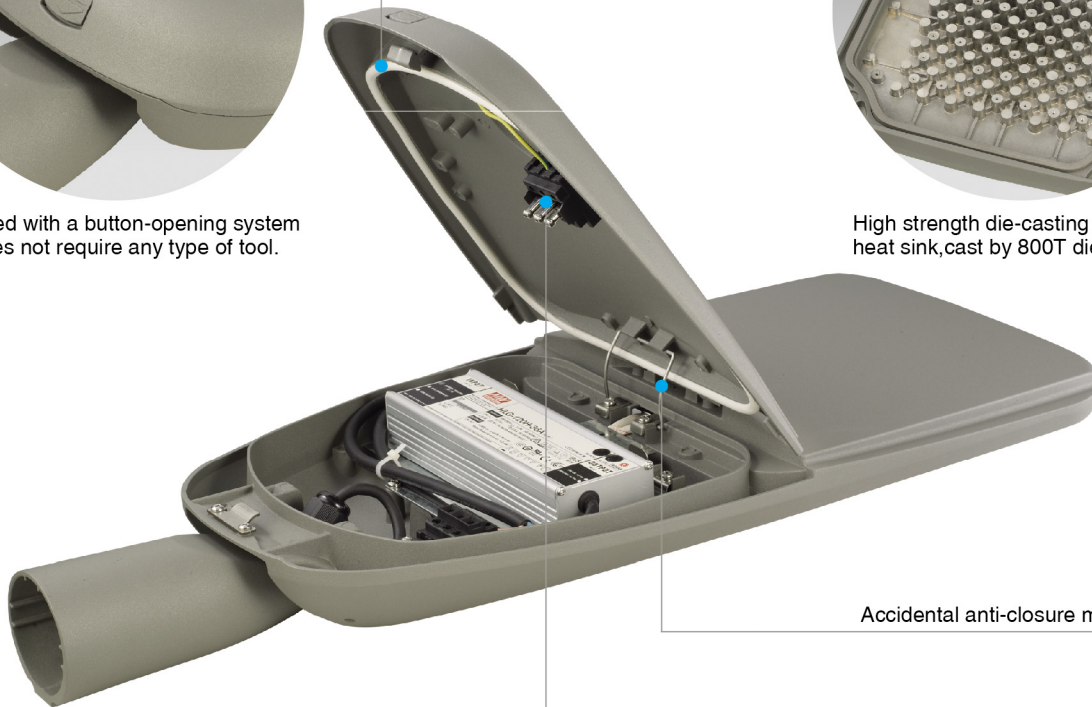


Designed with a button-opening system that does not require any type of tool.

Silicone gasket providing an IP 66 tightness level to the entire luminaire.



High strength die-casting aluminium heat sink, cast by 800T die-cast machine.



Accidental anti-closure mechanism.



Fixing: Side or vertical fitting diameter 60mm, angle can be adjustable.
Side: Adjustable luminaire from 0-10 slope.
Vertical: Adjustable luminaire from 0-15 slope.

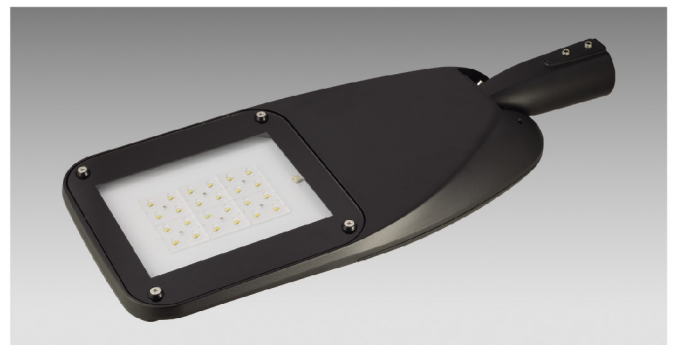
Electrical disconnecter (immediate, automatic disconnection of the power supply).



Gear plate: Steel plate, Replacement of wiring plate without requiring tools.



Finishing: Surface anti-ageing electrostatic spray processing, super resistance to corrosion.



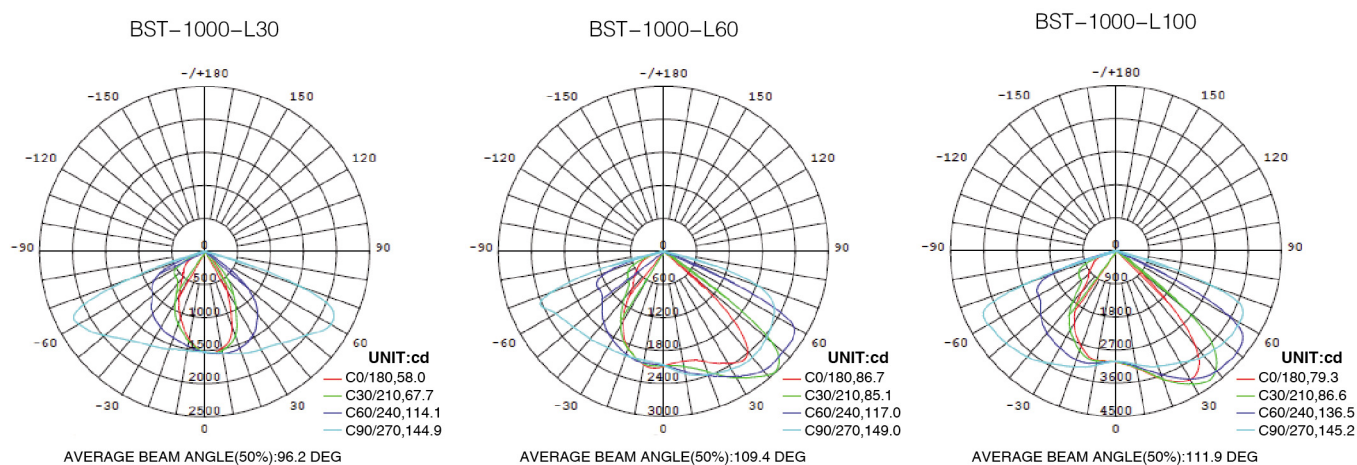
CREE XTE 24 LEDs for 30W/40W

BST-1000-L

Product Description

Product Code	BST-1000-L					
LED Quantity	24 LED	24 LED	32 LED	32LED	48 LED	48LED
Rated Power	30W	40W	60W	80W	100W	120W
Color Temperature	3000/4000/5000/6500K					
Luminous Flux	3150lm	4100lm	5850lm	7600lm	9400lm	12500lm
Light Efficiency	90-110lm/W					
Voltage/Frequency	100-277V/50-60Hz					
Power Factor	PF>0.9					
Color Rendering Index	>70					
Installation Height	4-10m					
IP Protection degrees	IP66					
IK Protection degrees	IK10					
Lamp Weight :N.W(Kg)	7.20	7.20	7.46	7.46	7.62	7.62
Warranty(Years)	5 Years					
Packing Size	710x310x140mm					

Light Distribution Curve



CREE XTE 32 LEDs for 60W/80W



CREE XTE 48 LEDs for 100W/120W